

1927

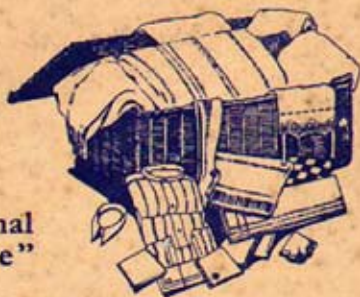


CHALFONT ST. PETER

The OFFICIAL GUIDE

LANSDOWN LAUNDRY
CHALFONT ST. PETER

**"Personal
Service"**



THE

Austin

MAGAZINE

The

AUSTIN OWNER'S FRIEND

AT ALL NEWSAGENTS AND BOOKSTALLS

4d. Monthly

*Specimen copy sent free and post free on application
to the Publishers*

ED. J. BURROW & CO. LTD.
IMPERIAL HOUSE, CHELTENHAM



The
Ferox Kennels
of
WIRE-HAIRED TERRIERS

To own one is worth while,
whether for Exhibition, Sport,
or Companionship

CHALFONT ST. PETER

Telephone - Gerrards Cross 962

Telephone
GERRARDS CROSS 220

THE PARK HOTEL RIDING ACADEMY

(Proprietress: Miss C. Ley)



**RELIABLE HACKS & HUNTERS
FOR HIRE & FOR SALE**

JUMPING LESSONS A SPECIALITY

*Instruction in care of Horses. Special terms for
Schools. Spacious Boxes for Horses at Livery.
Children's Pony Club, 12 lessons, £2.10 0*

CHALFONT ST. PETER

T. J. L. DAVIES
BUILDING CONTRACTOR

Telephone
Gerrards
Cross
436

Estimates, Designs, Plans and Surveys carried out
CHURCHFIELD WORKS, Chalfont St. Peter



T. J. L. DAVIES & CHRISTIE

Public Works Contractors

Gas, Water, and Sewer Specialists

CHURCHFIELD WORKS, Chalfont St. Peter

Telephone: Gerrards Cross 436

Station: Gerrards Cross (G.W.R. and L.N.E.R.)

TANNER'S FOOT SERVICE



For all classes of FOOTWEAR
Agents for Bective and Lotus and
Delta Shoes

Personal attention given to all orders

15 THE MARKET PLACE
CHALFONT ST. PETER



CHALFONT ST. PETER

THE OFFICIAL GUIDE



Issued under the Auspices
of the Chalfont St. Peter
Parish Council



Copyright :

Ed. J. Burrow & Co. Ltd., Cheltenham, and
Wellington House, 125 Strand, London, W.C.2



CHALFONT
ST. PETER
FROM
THE AIR

Acrosilms Ltd.
Photo

CHALFONT ST. PETER

(BUCKINGHAMSHIRE)

SITUATION

AS the traveller leaves the Metropolis westward by the Aylesbury Road, after passing through Uxbridge the Misbourne Valley is reached and the road gently inclines as the Chilterns appear ahead and the Chalfont country is entered. And lovely country it is too! rich alike in scenic beauty and literary associations.

The Chalfonts lie just off the main road on the left. Chalfont St. Peter is an extensive parish embracing some 4,359 acres, stretching northward as far as Chorley Wood, south-westward to Beaconsfield and south as far as Gerrard's Cross.

ACCESSIBILITY

By Rail

The nearest railway station is Gerrard's Cross (1½ miles south) which is 17½ miles from Paddington on the G.W.R. and 18¾ from Marylebone by L.N.E.R. There are over thirty trains each way daily, the last from Marylebone being at 11.50 p.m. The business men's trains (non-stop) do the run in twenty-five minutes. Fares: first-class single 3/7, return 7/2; third-class single 2/2, return 4/-; week-end return: first-class 5/-, third-class 3/-; cheap day tickets: first-class 3/7, third-class 2/2.

By Road

London is quickly and conveniently reached by road by the hourly services of the Amersham and District Motor Bus Co. Ltd. The time taken

is one hour and a quarter on the average, and fares are 1/9 single, 2/6 return.

HISTORICAL NOTE

The place-name would seem to have been derived from *Ceadel's font* or *spring*. *Chauld-font* is supposed to have been the early form and is probably of pre-Conquest origin.

Of the early history of this ancient village little is known. Even the old parish church has disappeared but items in the parochial register, which goes back to 1538, throw interesting side-lights on former days. Of the medieval period therefore little record has survived. It is known that the rectory and manor once belonged to Missenden Abbey, but passed at the Dissolution of the Monasteries into the possession of Sir Robert Drury and subsequently into the Bulstrode family. A record dated 1552 makes mention of "all the goodes plate juelles and all other ornaments perteynyng to the Parish Church of St. Peter's Chalfounte."

Actually, the oldest building in the village to-day is the Greyhound Inn, which was built in the fourteenth century. Historically, the village has played no part in the pageant of national events, ever pursuing the even tenor of its way, undisturbed by war and rumours of war, though the fine Memorial Hall perpetuates the memory of those who, even from this remote spot, went forth and made the supreme sacrifice in the Great War. However, its associations, especially with famous Quaker families, are particularly interesting. The names of Milton, Hampden, Penn, Isaac Pennington and Ellwood come to mind; while those of Judge Jeffreys and Horace Walpole are intimately connected with this locality.



Woolstone-Barton & Co. Ltd., Photo

THE MARKET PLACE

PUBLIC BUILDINGS

The Parish Church

Dedicated to St. Peter, the present structure of typical early Georgian style was built in 1714 to replace the original church. It is believed that some of the stonework of the windows and doorways was obtained from the Roman ruins of *Verulamium* (St. Albans). Of unassuming design, the interior retains five remounted brasses from the old church, of more than passing interest. They date from the fourteenth to the sixteenth centuries, and the one dated 1540, commemorating Sir Robert Hanson, who was a vicar here, is palimpsest, inasmuch as the original figure of a priest in mass vestments, engraved about 1440, has been shaded and the feet rounded for re-use as a memorial of the later period. That to William Whappelode and wife (d. 1398) was re-engraved in 1446. Whappelode was steward to Cardinal Beaufort.

The church plate is of considerable value and interest; it is of pewter and dates from 1661-93.

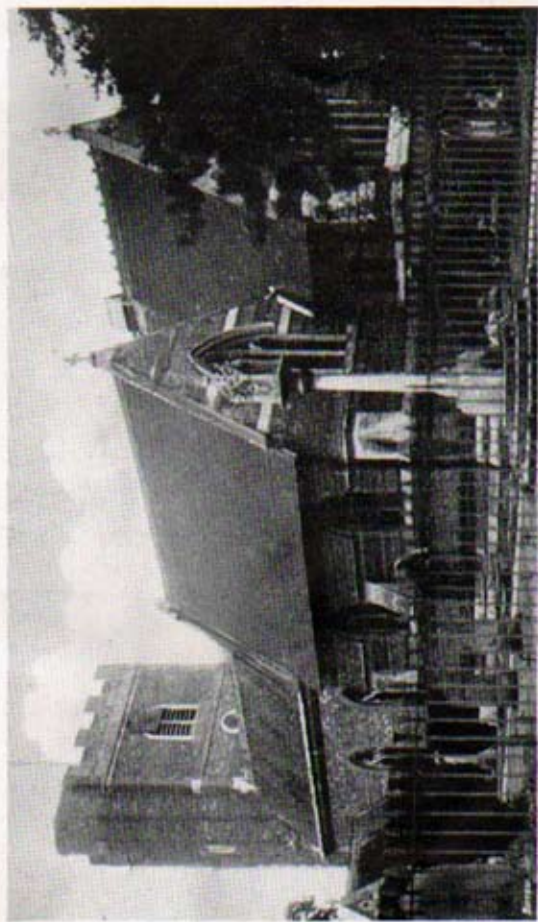
The list of incumbents goes back to the thirteenth century, while the register has been continuously kept since 1538.

The Greyhound Hotel

This is an ancient hostelry dating from the fourteenth century. It was thoroughly restored in 1924-5, when some interesting old oak beams, coins of the period of James I, etc., were discovered. Here in former days civil courts were held and it is reputed that the notorious Judge Jeffreys attended while he resided at the Manor House near by. The Misbourne flows right under the building.

The Grange

Here a modern structure is built on the site of the mansion wherein lived Isaac Pennington



Woolstone-Barton & Co. Ltd., Photo

ST. PETER'S PARISH CHURCH

from 1657-1665. His step-daughter, Guelma Springett, married William Penn, the founder of Pennsylvania, with whom she lies buried at Jordans. Pennington, who at one time was Lieutenant of the Tower and Lord Mayor of London, was noted for his Republican views and he is remembered in history chiefly for his "Root and Branch Petition," which had for its object the abolition of episcopacy.

The Grange was for long a rendezvous with the Friends and here Thomas Ellwood became a Quaker. In 1666 the Penningtons were compelled to leave the Grange and a little later it is believed Judge Jeffreys lived here during the erection of his mansion at Bulstrode. The Grange is now occupied as a Convent School.

The Memorial Hall

This is the popular venue of the village for indoor amusements, lectures, dances, whist drives, amateur theatricals, etc., especially during the winter evenings. It was opened in 1920 by Earl Beatty, G.C.B., O.M., G.C.V.O., D.S.O., in memory of those of the village who fell in the Great War.

The Cottage Hospital

The Cottage Hospital is at Gold Hill and is supported by voluntary contributions. It was established in 1871 by a gift of the building and land by J. N. Hibbert, Esq., and Mrs. Hibbert of Chalfont Park. In 1924 an operating room, nurses' room, etc., were added, since when a clinic kitchen and new offices have been built. The Hospital serves the district of Chalfont St. Peter, Gerrard's Cross and Hedgerley.

The Chalfont Colony

This is situated one mile north-east of the village. It is run by the National Society for



Woolstone-Barron & Co. Ltd., Photo

HIGH STREET

showing the Greyhound Hotel, once an old coaching inn

Epileptics (London address: Denison House Vauxhall Bridge Road, S.W.1). The institution is the first of its kind in the country and was established in 1893 with the assistance of a donation of £4,000 by Mr. J. Passmore Edwards. It is modelled after the famous German Colony at Bielefeld.

There is accommodation for ex-service men, and for women and children, and the organization is self-contained, there being fully-equipped farms, buildings, dairy, workshops, laundry, school, recreation hall, sports grounds, etc. The inmates are kept well-occupied, the men being busy on the land, while the women do wonderful needlework. Ample facilities are provided for the enjoyment of indoor amusement and outdoor sport in the way of cricket, football, bowls, tennis, etc.

Gott's Monument is an obelisk built of flints standing some 50 feet high at the entrance to the Epileptic Colony. It bears the following inscription: "1785. To Newlands I mile III furlongs. To Chesham VII miles. Built by Sir H. T. Gott, Restored by W. Brown 1877. To Denham IV miles. To Uxbridge VI miles. London XXI. George III. B. 1738, R. 1760 to 1820." The local tradition is that Gott was a gardener at Windsor; while the King was out hunting he lost his way and the monument was erected by Gott to mark the spot.

PLACES OF PUBLIC WORSHIP

In addition to the parish church already mentioned, there are the following:

Church of England: All Saints', Ovalway; St. Paul's, Horn Hill.

Roman Catholic: St. Joseph's, Austenwood.

Baptist: Gold Hill Chapel (dating from 1774).

PUBLIC SERVICES

Electricity Supply

This is provided by the Uxbridge and District Electric Supply Co. Ltd.; District Offices and Showrooms—148 High Street, Uxbridge.

Rates for Supply—Ordinary Flat Rate, 5d. per unit; alternatively, an "All-In Electricity Service" tariff, consisting of a fixed annual charge, payable quarterly, plus 1d. per unit.

Electrical apparatus is hired: Cookers from 5/- per quarter, Coppers at 4/- per quarter, Automatic Water Heaters from 5/- per quarter.

Gas Supply.

This is made available by the Uxbridge, Maidenhead, Wycombe and District Gas Company at the following rates:—11·6d. per therm (4/6½ per 1,000 cubic feet), subject to liberal discounts (according to quantity used) both for domestic and power purposes, ranging from 2½ per cent to 30 per cent.

Water

Water is supplied by the Rickmansworth and Uxbridge Valley Water Company.

SPORT AND PUBLIC AMUSEMENT

There are clubs which provide facilities for football, cricket, hockey, tennis and bowls.

There is a fine 18-hole golf links in the grounds of Chalfont Park Hotel, where there is also a 9-hole course, hard and grass tennis courts and a Squash court.

At the Memorial Hall and the Village Hall at Horn Hill there is always something "going on" throughout the year.

CLUBS

The following is a list of the principal political, social, musical, etc., local organizations which serves to indicate that life in the delightful Bucks village, if quiet, is anything but stagnant.

Unionist Club ; Liberal Club ; Labour Club ; Chalfont St. Peter Social Club ; Horticultural Society ; the British Legion (both men's and women's sections) ; South Bucks Choral Society ; two lodges Antediluvian Order of Buffaloes (George Inn and Rose & Crown) ; Church Lads' Brigade and Girl Guides.

There is a Skating Rink at Gold Hill.

The Broadway Cinema is contained in part of the Memorial Hall.

RESIDENTIAL AMENITIES

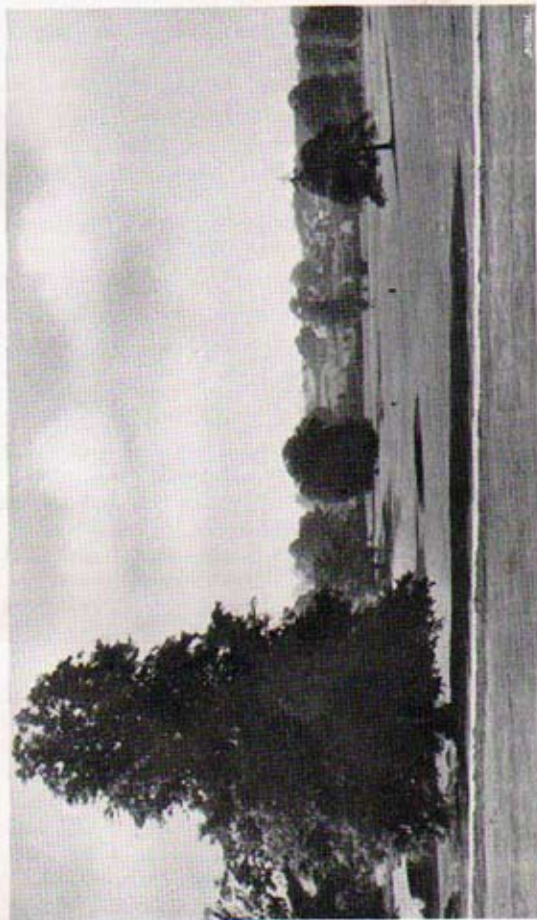
Eloquent testimony to the ideal residential amenities of Chalfont St. Peter is borne by the fact that several delightfully situated building estates have been developed of late years.

The Chalfont Heights estate, on a spur of the Chilterns, enjoys a southerly aspect ; gas and electricity and an abundant and pure water supply are available. A good class of property is being built on the Grove Estate, which extends to the Jordans Meeting House, Hillrise, The Vale, Petersville, Austenwood, and Latchmoor estates also offer select and charming building sites.

Accessibility, up-to-date public services, excellent shopping facilities, and well-organized social institutions make Chalfont St. Peter one of the best residential centres within a radius of twenty miles of the Metropolis.

EDUCATIONAL FACILITIES

Educational facilities are also of a high order, there being ample provision for elementary



Photochrom Co. Ltd., Photo

GOLF LINKS IN CHALFONT PARK

education, while there are several splendidly-equipped private educational establishments.

NEIGHBOURING RAMBLES

Chalfont St. Peter is particularly favoured in its delightful surroundings, **Austenwood** and **Gold Hill Commons** being popular playgrounds for the villagers, young and old, while to the nature-lover they are a paradise with their colourful abundance of gorse, ferns and may, and wild life generally.

Jordans (2 m. W.). Here is the historic Quaker Meeting House, the Mecca of American pilgrims, members of the Society of Friends and lovers of liberty from all over the world. Here lie the remains of William Penn, the founder of Pennsylvania, his wife and six of his children; Thomas Ellwood, Isaac Pennington and others. The barn near by the Jordans Hostel is supposed to have been built from timbers of the *Mayflower*.

Chalfont St. Giles (2 m. N.) is visited from afar for Milton's Cottage, now a museum (adm. 6d.). Hither Milton came in 1665 to escape the ravages of the London Plague and here he conceived his immortal *Paradise Regained*. The church retains traces of its Norman origin.

Beaconsfield (4 m. W.). In the churchyard here lies Edmund Waller (1605-1687), whose grave is marked by a fine monument. The interior of the church contains a memorial to Edmund Burke (1730-1797), the famous statesman. The seventeenth-century half-timbered Rectory is worth going far to see as it is a splendid specimen of the Elizabethan style of domestic architecture; it is open to the public and contains some interesting antique furniture. Beaconsfield is the home of G. K. Chesterton, and J. L. Garvin.

Stoke Poges (6 m. S.) is a famous pilgrim resort for the grave of Thomas Gray (1716-1771), whose immortal *Elegy* describes the peaceful churchyard where the poet and his mother rest. The church is a typical old English parish church.

The Thames Valley is reached some ten miles south-west and such famous tourist and historic places as **Windsor** (famous Castle, Royal Park and Mausoleum); **Eton** (world-celebrated college); **Burnham Beeches**; **Maidenhead**; **Cookham**; **Marlow** and **Henley-on-Thames** (of Regatta fame) are easily accessible. Northward stretch the lovely Chiltern Hills, richly studded with unspoilt, typically English towns and villages, preserving the peaceful atmosphere of bygone days. North-eastward lie **Watford** and **St. Albans**, the latter visited from all parts of the world for its wonderful Cathedral and remains of the Roman *Verulamium*.

GENERAL INFORMATION

Accommodation. *Hotels*—Greyhound (R.A.C., A.A.); King's Arms. *Refreshments*—River Café (see page 23).

Area. 4,359 acres land, 5 water.

Banks. Barclays Bank Ltd. (Mondays, Tuesdays, Thursdays, Fridays); Westminster Bank Ltd.

Distances. By road: Amersham 5 miles; London 22; Uxbridge 6.

Early Closing Day. Thursday.

House and Estate Agents. Chalfont Heights Estate Office; Milliner, J., Chalfont St. Peter.

Motor Engineers and Garage Proprietors. Grange Garage (see page 3 of cover); Mervyn White Services Ltd. (see page 20).

Ordinance Map. 6" scale, Square No. 48 NE.; 25" scale, Square No. 48 NE., 7 and 11.

Population. 1931 census: 6,217.

Rates in the £ (1933-4): 9.3.

Rateable Value. £47,321.

Soil. Mixed gravelly loam, subsoil chalk.

Water. Hard.

Telephone
GERRARDS CROSS 351

MERVYN WHITE SERVICES LIMITED

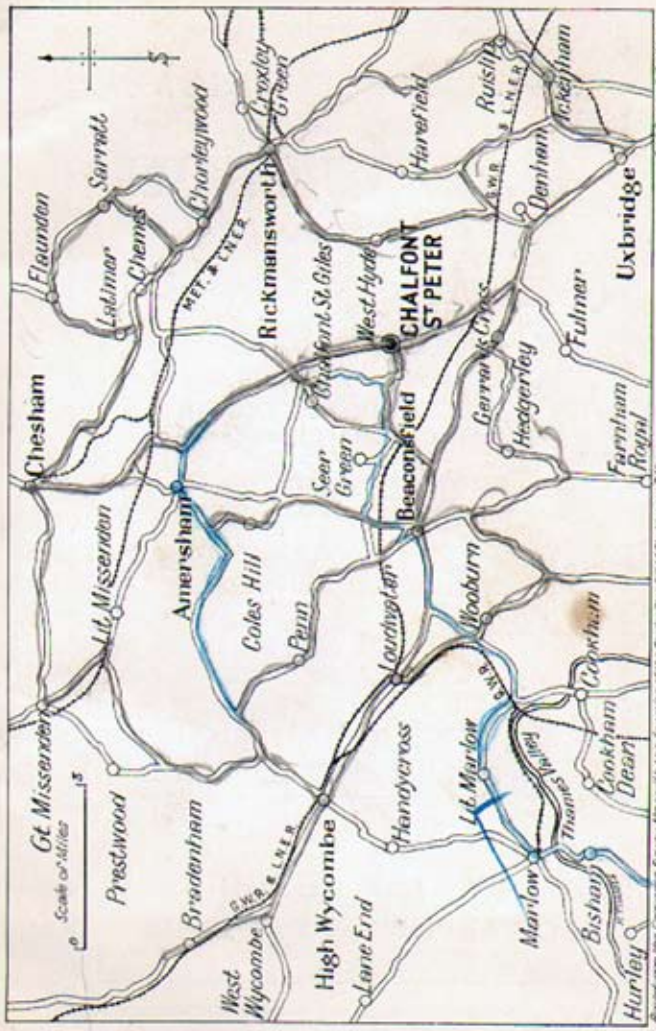
(Late Chalfont Motors)



*Rolls-Royce
Breakdown Equipment
available day and night*

CYLINDER GRINDING, ETC.
HIGH-PRESSURE GREASING
COMPLETE OVERHAULS

**LOWER ROAD
CHALFONT ST. PETER**



OUTLINE MAP OF THE CHALFONT ST. PETER DISTRICT

Based upon the Ordnance Survey Map with the sanction of the Controller of H.M. Stationery Office. Ed. J. Barron & Co. Ltd.

IF IT'S ELECTRICAL

Consult

G. F. SUTTON

*Electrical and
Radio Engineer*

Accumulators Charged

LAYTERS AVENUE, GOLD HILL

THE OLDEST LOCAL ELECTRICIAN

Telephone : GERRARDS CROSS 599

G. C. EZRA

**Newsagent, Stationer
Tobacconist and Confectioner**

•••

**GOLD HILL
CHALFONT ST. PETER**



RIVER CAFÉ

Morning Coffee
· Luncheons ·
Afternoon Teas
· Dinners ·
Confectionery
· Tobaccos ·

ALL HOME-MADE CAKES

Lower Road, Chalfont St. Peter

Telephone : Gerrards Cross 1001



The Noted Shop

for

HIGH-CLASS
GROCERIES

B. F. LOVELL
GROCER

9 Market Place, Chalfont St. Peter



PYNESFIELD FARM DAIRY

Proprietor : E. JURY
CHALFONT ST. PETER

Deliveries of
Rich, Fresh, New Milk
from local farm twice daily

**CREAM • BUTTER
AND NEW-LAID EGGS
A SPECIALITY**

Sole local agent for
"KESTREL" BRAND TEA



FRANK E. DELL LTD.

Automobile Engineers

Official Tecalemit Service
Station • Up-to-date
Machinery. Lift and Battery
Charging. Dunlop Stock.
REPAIRS A SPECIALITY
Accessories. Cars for Hire



**GRANGE GARAGE
CHALFONT ST. PETER**

Telephone : GERRARDS CROSS 196



E. LOFTY

COAL, COKE & WOOD
MERCHANT & CARTAGE
CONTRACTOR

Fire Logs, etc. Paving
and Rockery Stones.
Sand and Ballast, etc.

GARLINGE
GOLD HILL
Gerrards Cross

Telephone
GERRARDS CROSS 883

